

SPRING YEAR 2 HOME LEARNING

WHY SHOULD WE PROTECT THE POLAR REGIONS?

We're excited to be learning about two of the most extreme parts of the world, the Arctic and Antarctic. We will be exploring which animals and plants live in these regions and how they have adapted to survive there.

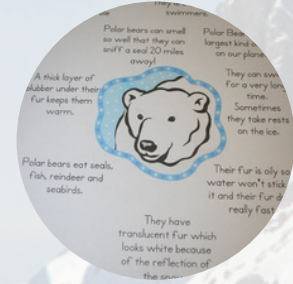
Below are some suggestions of things you could do at home. You can pick one or do as many as you like and you might have some super ideas of your own too! Any models, paintings, other work etc can be brought in for your child to share with the class. Alternatively, please email any photos to year2@damers.dorset.sch.uk.



Create a 'Northern or Southern Lights' picture.



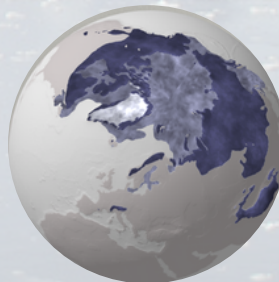
Create a habitat in a box showing the animals that live there.



Create an "All about..." fact poster for an arctic animal.



Are there any plants in the polar regions?
How have they adapted to live in the cold?



Explore how we can affect climate change in the polar regions [here](#)



Find out about polar explorers [here](#)



Build an igloo out of lego or sugar cubes.



Choose an animal which lives in the UK and think about how it has adapted to live in its habitat, for example, a hedgehog.



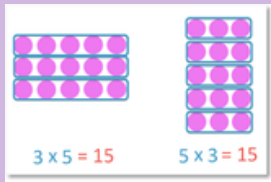
Draw some snowflakes

Knowledge and Vocabulary

Maths

Multiplication as equal groups.
Multiplying by 2, and 10.
Solving multiplication word problems

Division: grouping and sharing.
Dividing by 2, 5 and 10.
Multiplication and division of 2,5 and 10.
Solving division word problems.
Odd and Even Numbers
The relationship of doubling and halving



Literacy

Non - Fiction writing
Headings and subheadings
Captions
Diagrams
Labels
Introductions
Paragraphs
Factual language
Scientific language
Present tense
Third Person - they, he, she



Science

Living things and their habitats

Why do some animals and plants only live in certain places?
What is a habitat? What is a food chain?

Vocabulary

living dead never alive habitats
micro-habitats food chain
hot/warm/cold dry/damp/wet
bright/shade/dark

Geography

Why are the polar regions so cold?
Are the polar regions the same?
What are the human and physical features of the poles?
Can you live in the polar regions? How have the polar regions changed over time?

Vocabulary

Arctic Antarctic polar adaptation climate
physical features

Spelling, punctuation and grammar



Homophones - words that sound the same but have different spellings and meanings.

Contractions - two words, made into one with an apostrophe (e.g. I am = I'm)

Sentence types:

- Commands,
- Questions
- Exclamations
- Statements

Suffixes - adding -ment & -ful to words.

Amazement, joyful etc.

Common Exception Words:

both most only move prove improve should would could
eye fast father find floor gold grass great half hold hour last
many mind money Mr Mrs old