

HOW DID THE ROMANS ADAPT TO LIFE IN BRITAIN?

Harmony Principle – Oneness

In nurturing an ability to be still and present, to connect to something deeper, we are building a sense of oneness with the world. We will explore how the Romans used this principle.

Below are some suggestions of things you could do at home. You can pick one or do as many as you like and you might have some super ideas of your own too!

Please email any photos to year3@damers.dorset.sch.uk. All home learning to be in school on Monday 25th March for a showcase.



Make an information booklet about the Romans.



Visit the Roman Townhouse in Dorchester.



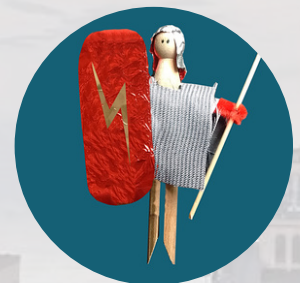
Make your own clay coil pot.



Create your own Roman villa using junk modelling.



Create a Roman inspired banquet.



Make a Roman soldier out of a peg.



Create a Roman mosaic.



Create your own Roman God or Goddess.



Create your own Roman shield.

Knowledge and Vocabulary

Maths

Money



Time



Picture and Bar Graphs



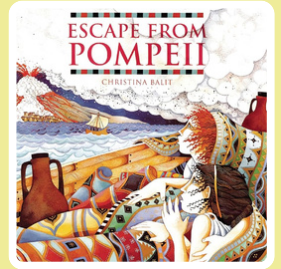
Vocabulary

pounds, pence, coins, notes, price, morning, afternoon, evening, night, a.m., p.m., midnight, noon, hour, minute, past, to, seconds, duration, calendar, day, week, month, year, leap year, data, pictogram, scale, tally chart, bar graph,

Literacy

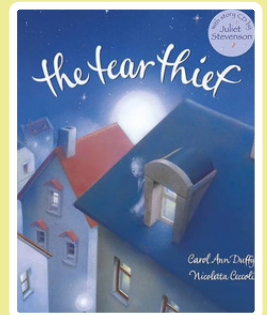
Escape from Pompeii

- Setting description
- Possessive apostrophes
- Conditional sentences
- Descriptive sentences
- Vivid descriptions
- Features of a newspaper
- Inverted commas



The Tear Thief

- Shared poem
- Letter writing
- Persuasive poster
- Book talk / discussion

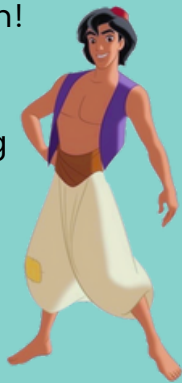


Performance

We're so excited to announce officially that this year our Year 3 performance will be Aladdin!

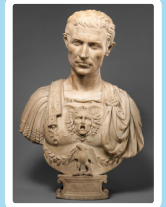
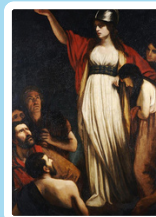
We'll be working on:

- Costumes and Setting
- Scripts
- Stage Performance and Presence
- Song and Dance
- Acting



History

We will be exploring how the Romans came to be in Britain and some of their most lasting inventions.



Vocabulary

empire, emperor, invade, mosaic, townhouse, villa, hydrocaust,

Art

Italian renaissance tiles
Using a compass
Printing



Spellings

Prefix: super- auto-
Homophones

Proofreading and editing

Words with the /k/ sound spelt 'ch'

Common Exception Words Weekly Revision